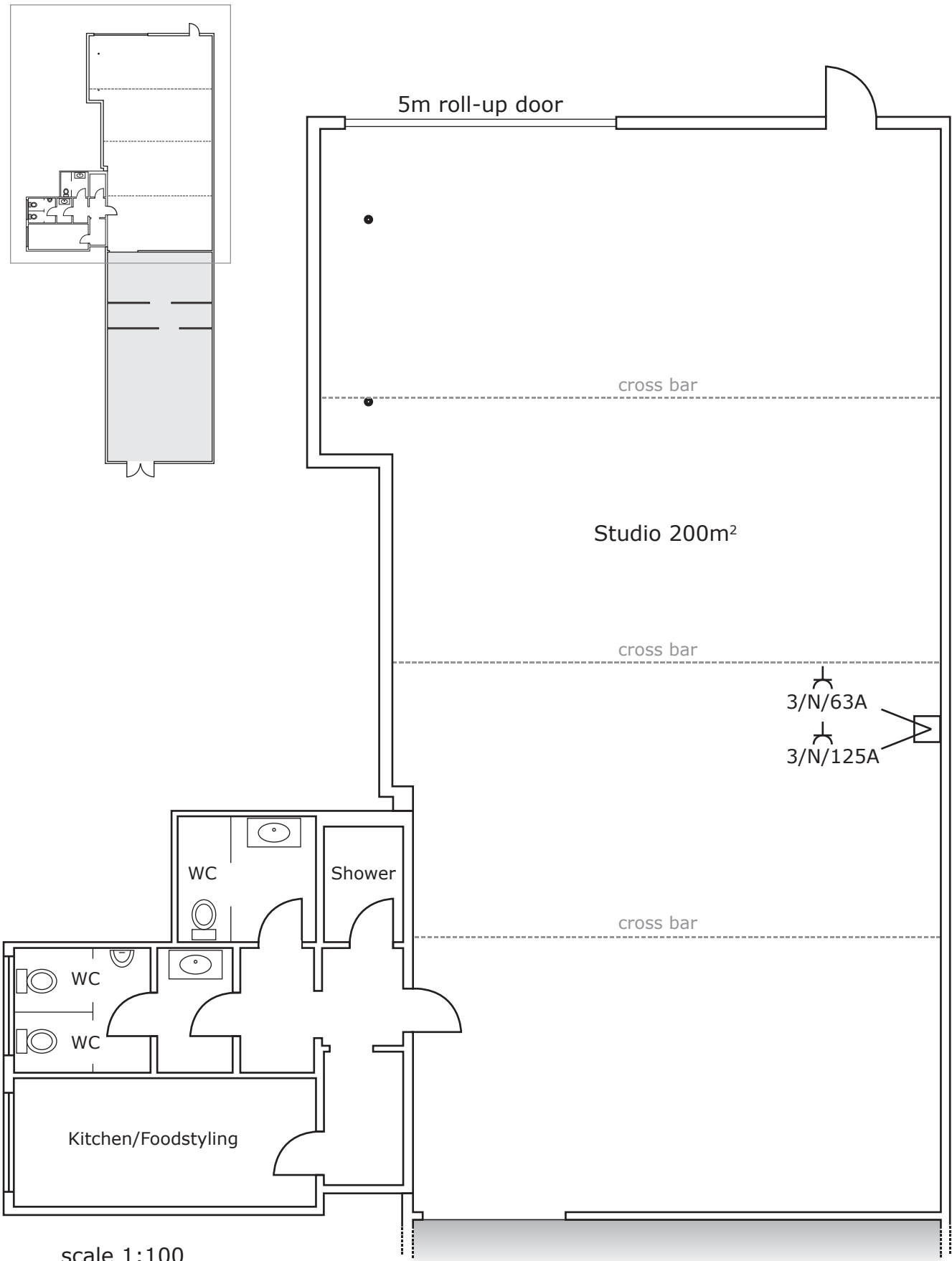
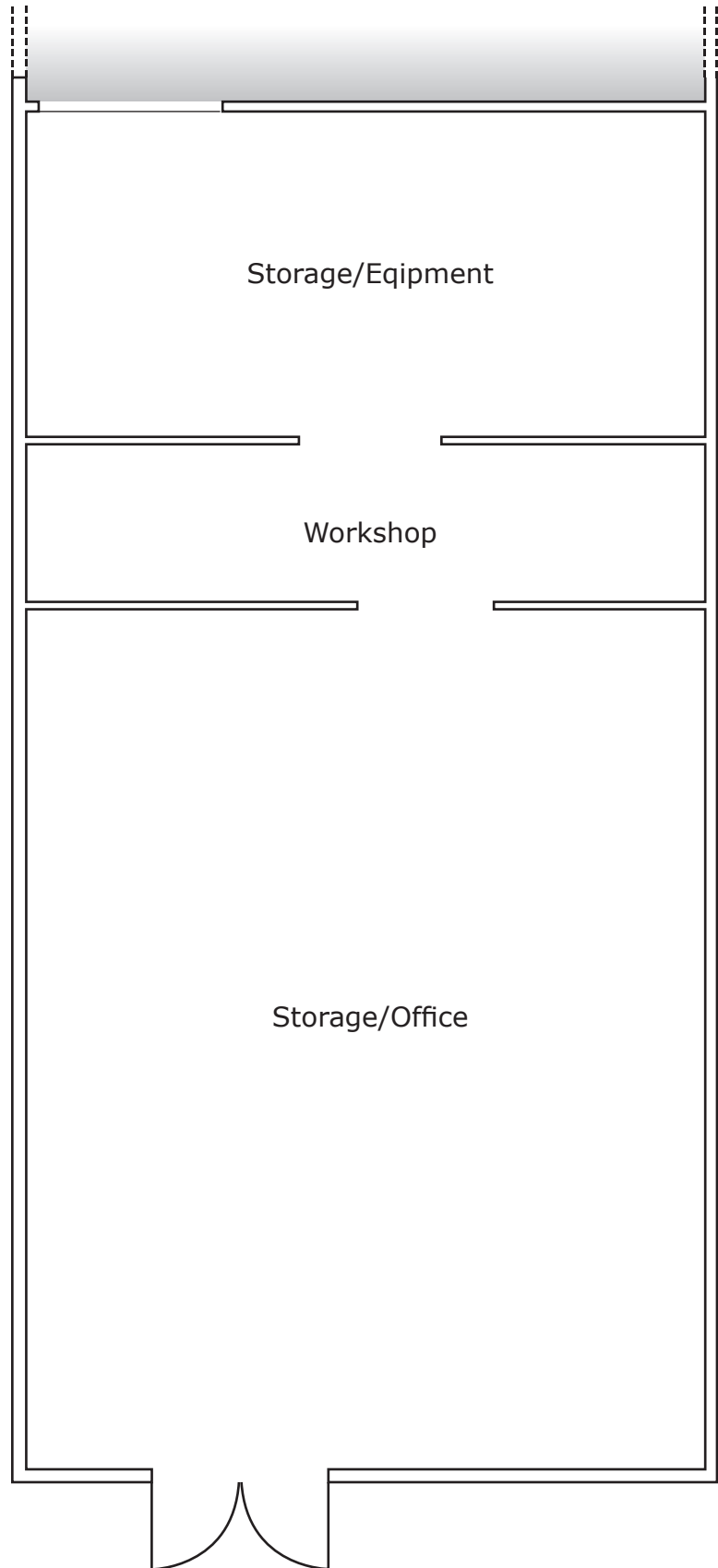
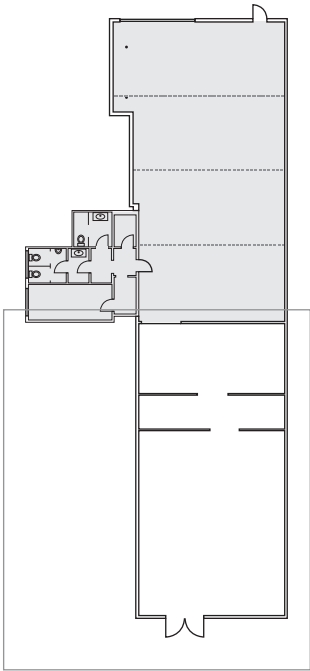


- 200 m² studio space, ~10m x 20m
 - ceiling height 5,4m - 6,85m, 3 cross bars at 4,8m
 - ground floor easy access, roll-up door, 5m x 4,3m, truck access
 - complete black-box
 - 125A & 63A power supply
 - parking
 - alarm secured
-
- studio base price 800€/day
(no overtime charges, parking included)
 - kitchen for foodstyling 100€/day
 - workshop 400€/day
 - end cleaning 100€
 - power usage for shoot to be invoiced separately
 - on request: truss, scaffolding, molton black/green/blue/white, various backdrops, small selection of lighting/grip equipment





scale 1:100